

# Milford and Coach House Newsletter

## Winter 2006

### New Staff Members

- **Zoe Barlow - Start date 16.09.2005**  
**General Assistant - Part time**  
Zoe is employed part time and works flexibly in all departments. Zoe has settled well into the team and has previously worked as a Senior Care Assistant in another Home. Zoe has one son.
- **Lisa Vickers - Start date 01.11.2005**  
**Laundry Assistant - Alternate weekends**  
Lisa previously worked full time at Milford House in the laundry and has now returned part time following the birth of her twins.
- **Jane Whittingham - Start date 16.11.2005**  
**Care Assistant (nights)**  
Jane is Ann Wilkinsons sister who works as a Senior Carer on nights at Milford House. Jane previously worked for Milford Care Group and staff who remember her have a lot of good to say about her work! Jane is employed for three nights per week. Jane has 5 children.
- **Charlotte Bradbury - Start date 22.11.2005**  
**Kitchen Assistant - Full time**  
Charlotte has been employed on a full time basis for kitchen duties at The Coach House. Charlotte is currently studying an art and design course as well.
- **Marie Kelk - Start date 30.11.2005**  
**Care Assistant (Days) Full time**  
Marie is a mother of two children. She previously worked on nights at The Coach House and is keen to enrol for her NVQ training.

### Inside this issue

New staff	Pg 1/2
Forthcoming Celebration	Pg 2
Training	Pg 3
Recent Events	Pg 3
Recent outings/ Entertainment	Pg 3/4
Progress / Development	Pg 5
Forthcoming Entertainment	Pg 5



---

**Manager: Sharon Price**  
Milford House Care  
Home  
Derby Road  
Milford  
Derbyshire  
DE56 0QW  
01332 841753

---

## Winter 2006

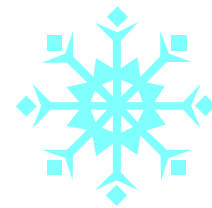
- **Kathryn Gascoyne – Start date 13.12.2005**  
**Housekeeper – Part time**

Kathryn has been employed part time as the new housekeeper to replace Angela at The Coach House. Kathryn has 4 children and previously worked at Milford House in approximately 1989 as a Care Assistant. Kathryn is involved in voluntary work also at her local school. By all accounts she also has a wonderful singing voice, we have yet to find out if this is true!



- **Ignacio Morales – Start date January 2006**  
**Relief Nurse**

Ignacio will be working on a relief basis to provide cover for The Coach House. Ignacio is a very experienced Nurse whose main job is in the Intensive Care Unit at the DRI. Ignacio and his wife are soon to expect their second child.



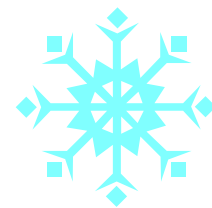
- **Susan Marsh – Start date 09.01.2006**  
**Breakfast Assistant – Part time**

Susan is employed part time to provide a personalised breakfast service at Milford House. She already knows many of our Residents as she has visited regularly to buy our lovely eggs!



- **Tracey Astle – Start date 11.01.2006**  
**Care Assistant – Full time**

Tracey has an NVQ level 3 in Care and previously worked in a Senior position in another local home. Tracey is settling well into her position and says she has been made welcome by all at Milford House.



- **Linda Smith – Start date 13.02.2006**  
**Housekeeper – Full time**

Linda will commence her employment on 13<sup>th</sup> February. Linda will replace Bella for housekeeping duties at Milford House. Linda moved to England from Scotland in 2004.



### Forthcoming Celebration at Milford House

**14<sup>th</sup> February 06 – Valentines Day**  
**28<sup>th</sup> February 06 – Shrove Tuesday**

**Recent Staff Training**

- Continuation of Level 2 and 3 NVQ's
- Skin and Wound Care training
- Adult Protection
- Positive Dementia
- Moving & Handling training
- Nurse Mentorship

**Current / Planned Training**

- Adult Protection
- Moving & Handling training
- Health and Safety
- COSHH
- Basic Food Hygiene
- Further NVQ enrolment

---

**Recent Events**

Bella will soon be leaving us to have her first baby, Bella has been an exceptional worker and her standards have been recognised by everyone who works with her.

Thank you Bella and good luck to yourself and Dave.

Bella does hope to return part time and she will be welcomed back with open arms!



---

**Recent Outings / Entertainment**


**31<sup>st</sup> October 05**

Halloween supper served by witches. Thank you to Carol Wingfield who went to extra lengths to create a 'spooky' atmosphere at The Coach House.



## Winter 2006

4

- 5<sup>th</sup> November 05      Firework displays at both The Coach House and Milford House, a lovely evening was had by all, and a pie and pea supper was served, visually impaired Residents enjoyed hearing the bangs and said it "had brought back memories" for them.
- 13<sup>th</sup> November 05      Chris Harris provided keyboard entertainment.
- 15<sup>th</sup> November 05      Unfortunately the trip arranged to the Circus had to be cancelled as the battery was flat on the bus.
- 13<sup>th</sup> December 05      A lovely time was had by all on the Residents Christmas Dinner outing to Derby Garden Centre.
- 21<sup>st</sup> December 05      Rock 'n' Jive entertainment was provided for the Residents Christmas parties. Unfortunately invites did not get to some relatives in time due to the postal delays, however the residents had a lovely time.
- 

---

### FRIENDS OF MILFORD HOUSE GROUP

Is anyone interested in helping to set up a 'Friends of Milford House' group?

Members of the group will be volunteers who are able to help out with tasks such as:-

- Arranging outings
- Escorting Residents on outings
- Entertaining in house / playing games

If you are interested please contact Sharon Price on  
01332 841753

Progress / Development

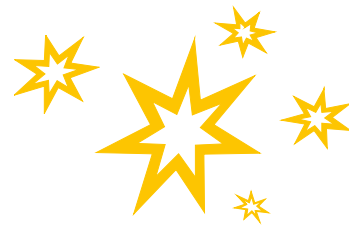
## Winter 2006

The link continues to progress despite hold ups with building inspectors over Christmas. We are still unclear of a date for completion, however the changes surrounding the laundry areas have now been significantly improved. New storage areas have been provided for the Milford kitchen and the floor, roof and studding are now in place within the link. Plans for replacement of carpets and soft furnishings are in place for The Coach House and also the dining area.

**Milford House Care Home**  
**Derby Road**  
**Milford**  
**Derbyshire**  
**DE56 0QW**  
**01332 841753**

## Forthcoming Entertainment

- **Suzie and Dave Goodier**  
**Sing-a-long and Guess the tune**  
**Prizes for winners!**  
10<sup>th</sup> February, 2.30pm - Milford House  
28<sup>th</sup> February, 2.30pm - Coach House
- **Roger Filkins Entertainer**  
21<sup>st</sup> February, 2pm - Coach House  
3pm - Milford House
- **Estonia Fashions**  
21<sup>st</sup> February, 11am - Milford House



Milford continues to be upgraded. The reception and main hall have been re-carpeted following the completion of work on the lift. Currently the decorators are in which will see the reception and main hall completed in a style more complementary to the period of the Home. Further works will include replacement of the carpets in the second lounge and the dining room and also further upgrades of bedrooms.

